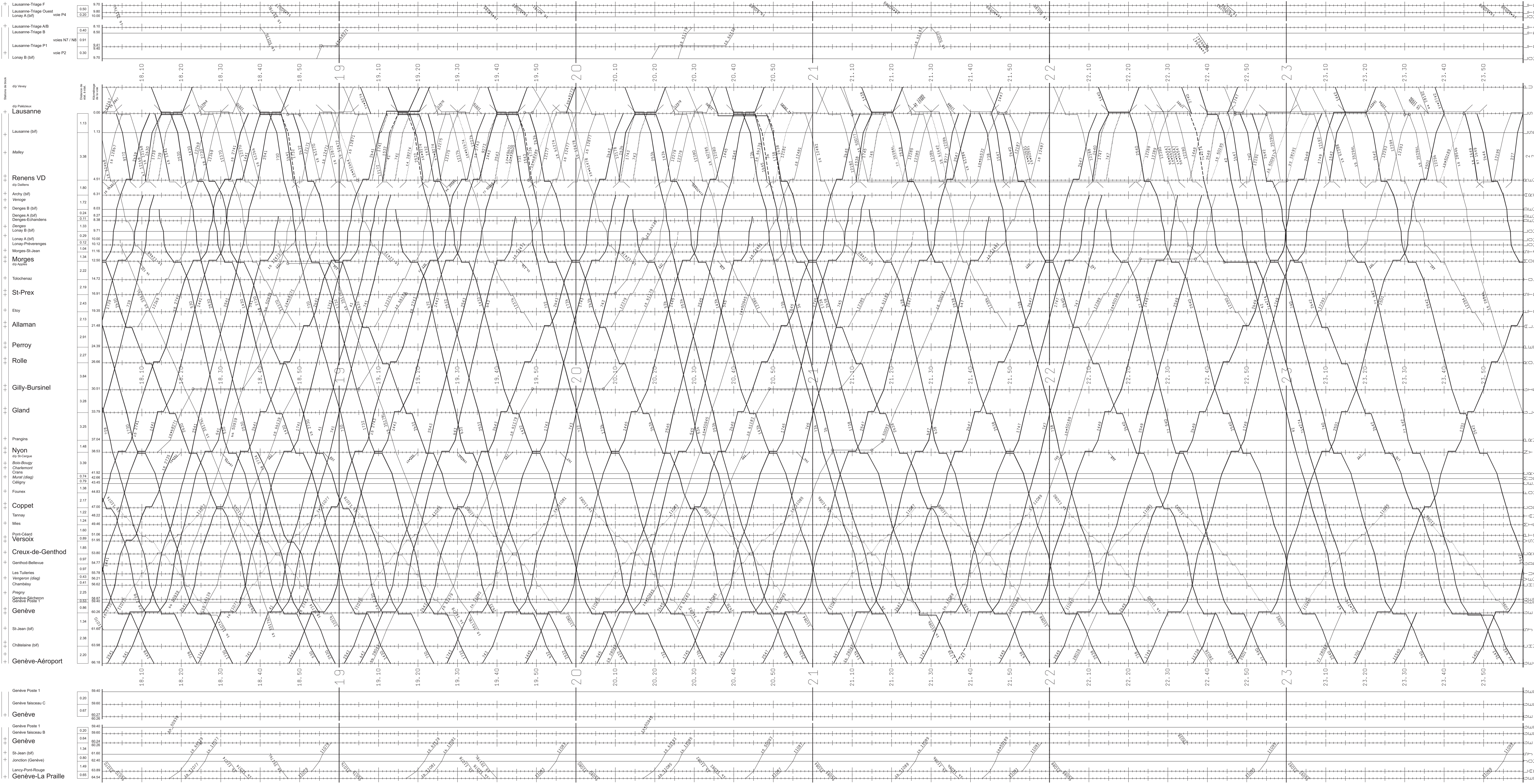
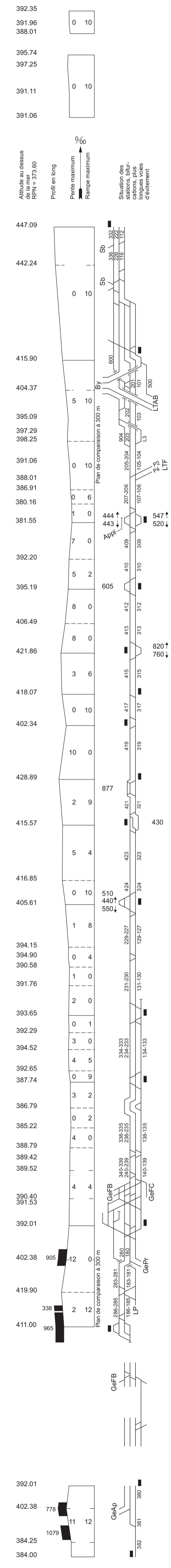


Vertical axis labels (from top to bottom):  
Lausanne/Triage F  
Lausanne-Triage Ouest  
Loney A (bf)  
voie P4  
Lausanne-Triage A/B  
Lausanne-Triage B  
voies N7 / N8  
Lausanne-Triage P1  
Loney B (bf)  
voie P2  
Lausanne  
Lausanne (bf)  
Mälley  
Renens VD  
Archy (bf)  
Veroye  
Denges B (bf)  
Denges A (bf)  
Denges-Echandens  
Loney B (bf)  
Loney A (bf)  
Loney-Prevaerenges  
Morges-St-Jean  
Morges  
dip Appré  
Tolochenaz  
St-Prex  
Etoy  
Allaman  
Perroy  
Rolle  
Gilly-Bursinel  
Gland  
Piangins  
Nyon  
Bois-Bugny  
Charlemont  
Crens  
Mant (dip)  
Céligny  
Founex  
Coppet  
Tannay  
Mas  
Pont-Céard  
Versoix  
Creux-de-Genthod  
Genthod-Bellevue  
Les Tulleries  
Vergennes (dip)  
Chambésy  
Priqny  
Genève-Stachson  
Genève Poste 1  
Genève  
St-Jean (bf)  
Châteline (bf)  
Genève-Aéroport  
Genève Poste 1  
Genève faïçeau C  
Genève  
Genève Poste 1  
Genève faïçeau B  
Genève  
St-Jean (bf)  
Jonction (Genève)  
Lancy-Pont-Rouge  
Genève-La Praille







Vertical axis labels (elevation in meters): 392.35, 391.56, 388.01, 395.74, 391.11, 391.06, 447.00, 442.24, 415.90, 404.37, 395.00, 397.25, 388.25, 391.06, 388.01, 388.91, 380.16, 391.55, 392.20, 395.19, 406.49, 421.86, 418.07, 402.34, 428.89, 415.57, 416.85, 405.61, 394.15, 394.90, 390.56, 391.76, 393.65, 392.29, 394.52, 392.65, 397.74, 386.79, 385.22, 388.79, 389.42, 389.52, 390.40, 391.53, 392.01, 402.38, 419.90, 411.00, 392.01, 402.38, 384.25, 384.00.

Horizontal axis labels (stationing): 18.10, 18.20, 18.30, 18.40, 18.50, 19.00, 19.10, 19.20, 19.30, 19.40, 19.50, 20.00, 20.10, 20.20, 20.30, 20.40, 20.50, 21.00, 21.10, 21.20, 21.30, 21.40, 21.50, 22.00, 22.10, 22.20, 22.30, 22.40, 22.50, 23.00, 23.10, 23.20, 23.30, 23.40, 23.50.

Station names and points: Lausanne/Triage F, Lausanne/Triage Ouest, Lonay A (bf), Lausanne-Triage A/B, Lausanne-Triage B, voies N7 / N8, Lausanne-Triage P1, Lonay B (bf), voie P2, dip Vevey, dip Pâtissier, Lausanne, Lausanne (bf), Malley, Renens VD, dip Dattens, Archy (bf), Venoge, Denges B (bf), Denges A (bf), Denges-Echandens, Denges Lonay B (bf), Lonay A (bf), Lonay-Preverenges, Morges-St-Jean, Morges, dip Aepin, Tolochenaz, St-Prex, Etoy, Allaman, Perroy, Rolle, Gilly-Bursinel, Gland, Prangins, Nyon, dip St-Cergue, Bois-Bougy, Charmont, Crens, Muret (ding), Céligny, Founex, Coppet, Tannay, Més, Pont-Céard, Versoix, Creux-de-Genthod, Genthod-Bellevue, Les Tuilleries, Veignon (ding), Chambléty, Prigny, Genève-Stachson, Genève Poste 1, Genève, St-Jean (bf), Châteline (bf), Genève-Aéroport, Genève Poste 1, Genève faïçeau C, Genève, Genève Poste 1, Genève faïçeau B, St-Jean (bf), Jonction (Genève), Lancy-Pont-Rouge, Genève-La Praille.